

# SUMMER

## DOUBLES LEAGUES RULES

### Game Rules

- Games are self-officiated. All games will be played according to the USAPA Rulebook.
- [CLICK HERE](#) for the rulebook. 2026-USA-Pickleball-Rulebook.pdf
- Questions: email [info@pickleballvb.com](mailto:info@pickleballvb.com) (Please do not contact the front desk with questions about this league).

### Registration and League Format

- Both partners of a doubles team must be individually registered prior to the registration deadline to participate in the League.
- Any players that do not have a partner should register in the “No Partner” section. The League Coordinator will contact individuals if/when another individual is available to play. If for any reason we can not find you a partner we will refund your registration
- Participant’s skill levels are listed with registration and are self-rated.

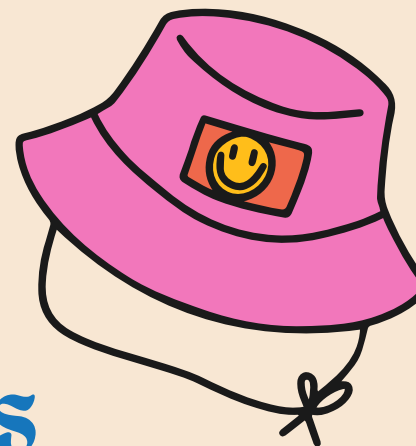
### Equipment

- Participants are required to bring their own paddles.
- Type of ball used for this league - Silkirk or Lifetime. Each team must bring one new ball each week.



Questions? Email us at [info@pickleballvb.com](mailto:info@pickleballvb.com)





# SUMMER

## MIXED LEAGUES RULES

### Schedules

- The schedule will appear each week on the mobile app SWISH or may be provided by the coordinator.
  - No adjustments will be made once the schedule has been created.
- Make-Up Matches: not allowed unless for league cancellation due to weather or other.
- Any team or player that cannot attend a scheduled match must notify the League Coordinator as soon as you can. You can have a substitute for one week only of the league with league coordinator approval and the substitute must be within .2 skill points of the registered league player they are substituting for. You may suffer a penalty if you do not show up for league. Failure to provide any notification will lead to forfeiture of the match. The opposing team will be credited with the victory.

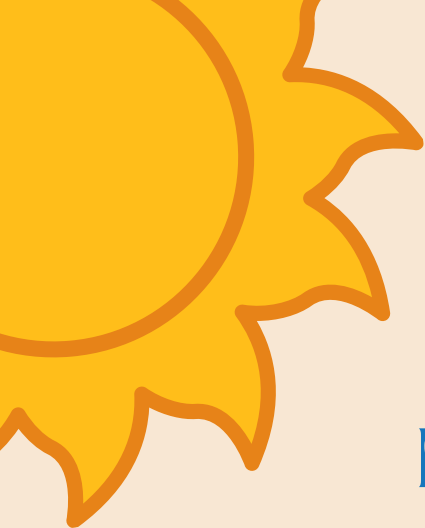
### Inclement Weather and Cancellations

- In the event of inclement weather or unforeseen circumstances the League Commissioner reserves the right to cancel or reschedule games.
- Canceled games will be rescheduled at the end of the league session or by adding these games to another league night at the discretion of the League Coordinator.



Questions? Email us at [info@pickleballvb.com](mailto:info@pickleballvb.com)





Pickleball  
Virginia Beach

# SUMMER

## MIXED LEAGUES RULES



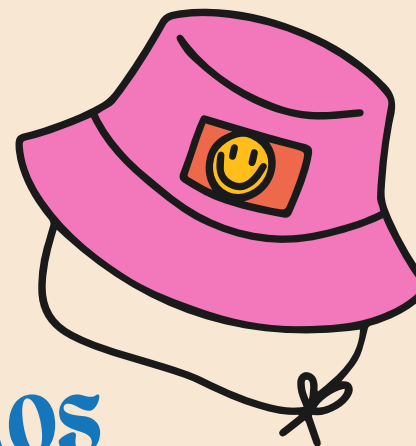
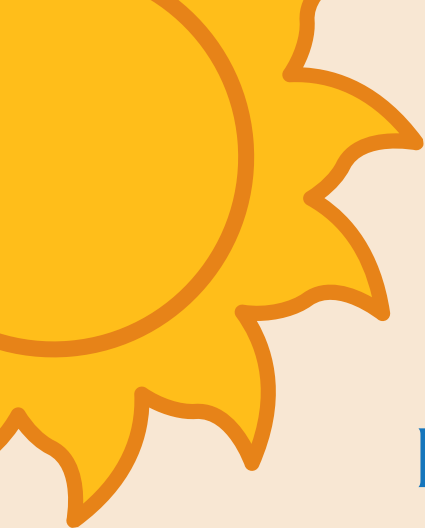
### Game Format

- Starting Time: Matches will start as scheduled. Teams will be given a 15-minute grace period before a forfeit is announced.
- Coin Flip: Teams will flip a coin or one team putting a 1 or 2 behind their back and the other team guessing the number to determine which team will serve first.
- Games: Teams will play the best two out of three or three out of five games to 11 points (win by two points) each week depending on the league. Teams shall switch sides at 6 points (5th game only when applicable).
- Time Cap: There is a 2-hour time limit on matches.
- Time Outs: Each team will be granted one 60-second timeout per game. If a player can not finish the current game scores will be entered as is. If the team needs to default for the rest of the games they will lose the match
- Game Scores: Both teams are required to send the scores to the League Coordinator or enter them on the mobile app SWISH. Scores should be reported before players exit the facility/courts each week. Any scores not received within 24 hours of match completion will result in a double forfeit in which both teams will receive a loss for the match.
- Substitution: Sub players are not allowed w/out league coordinator approval
- Medical Timeout: Players may pause for injuries. If unable to continue, please notify the League Coordinator ASAP
- DUPR will not be used in this league.



Questions? Email us at [info@pickleballvb.com](mailto:info@pickleballvb.com)





# SUMMER

## DOUBLES LEAGUES FAQS

### 1) What is Mixed Doubles Pickleball League ?

It's a league where teams play weekly. Each team needs 2 players (1 female & 1 male)

### 2) What are the levels for this type of league?

Intermediate & Intermediate Advance Level. These players have progressed beyond the beginner level and acquired moderate skill and experience. Players should have a solid understanding of the basic rules and techniques of the game.

### 3) Playing Formats & Scoring:

Teams will play the best two out of three games or best of five games to 11 points (win by two points). Teams shall switch sides at 6 points (3<sup>rd</sup>, 4<sup>th</sup> or 5<sup>th</sup> game only).

### 4) How is the team assembled?

You are required to have a partner, but if you can't find one, we will try to find you one (no guarantee - you will be refunded if we can not find you a partner).



Questions? Email us at [info@pickleballvb.com](mailto:info@pickleballvb.com)





# SUMMER

## DOUBLES LEAGUES FAQs

### 5) How can I select my team's name?

In this league, you can decide on any name you would like

### 6) Can I play in two teams? / Can I sub for another team?

You can play on other leagues on other nights however you can only play on one team within a league.

### 7) Can I split a spot with another player?

No, spots cannot be shared for this league.

### 8) What is the start date for this league?

Scheduled Date: The week of May 24, 2026. If a day is cancelled due to weather or other we will extend the league by one or more weeks depending on how many league days had to be cancelled.

### 9) What is the cost of the Mixed Pickleball League:

PVB Members: \$65.00. Non-Members: \$90.00

### 10) How long does the league last?

The league lasts 7 weeks. More details will be provided on the first day of the match.



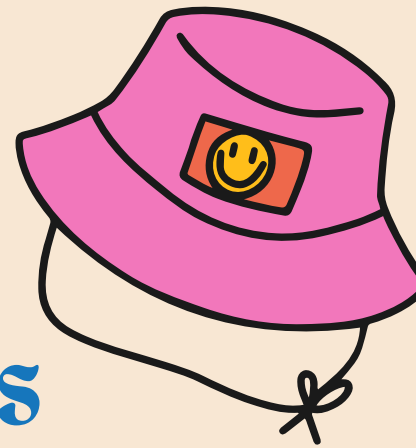
Questions? Email us at [info@pickleballvb.com](mailto:info@pickleballvb.com)





# SUMMER

## DOUBLES LEAGUES FAQs



### 11) When is the payment due?

Payment is due when you first register on our website

### 12) When and where are the matches for this league played?

The official calendar will be provided to all players on the website or mobile app. The league matches are scheduled every week at 6:00 PM at PVB, 928 S. Birdneck Road, Virginia Beach, VA 23451.

### 13) Type of ball used for this league?

Silkirk or Lifetime

### 14) What should I do if my partner is late to start the match?

Players should ensure their your partner arrives on time. See Rules of this League

### 15) How do I record or monitor my scores?

Scores will be entered using a mobile application. Detailed information regarding the app will be provided before the league start.

### 16) Are there any prizes for the winners of this league?

Yes, only the 1st and 2<sup>nd</sup> place winners will receive prize.



Questions? Email us at [info@pickleballvb.com](mailto:info@pickleballvb.com)





# SUMMER DOUBLES LEAGUES FAQS

## 17) What are the prizes?

Cash, Medals, trophies, and/or equipment raffle depending on the league.

## 18) Can I invite my friends/colleagues to play the Mixed Pickleball League?

Yes, as long as they are intermediate or intermediate-advanced level players. Non-members are welcome

## 19) Why should I participate or what are the benefits of this league?

Participate in tournaments by playing under more pressure at your level. Your rating or ranking will not be affected, whether it is DUPR or UTPR. Meet other players to practice and improve your pickleball skills.

## 20) What does it mean if it says 7.5 combine skill?

This means that both players combined skill levels can not be above 7.5. A team with one 3.0 and one 4.5 player would equal 7.5 or two 3.0 plers would equal 6.



Questions? Email us at [info@pickleballvb.com](mailto:info@pickleballvb.com)

